

**This is how you can join us
on our way to Bethlehem
in the Holy Night**

Send the names you would like to
place on our scroll before
Saturday, 19th December

With the online application:
www.dormitio.net/christmas

As an email to:
weihnachtsaktion@dormitio.net

Or by post:
Dormition Abbey
P.O.B. 22
9100001 Jerusalem
Israel

If you wish to join our charity campaign in order to
support social projects in Bethlehem and the work of
Dormition Abbey you can do this on our website (dormitio.net) or donate to:

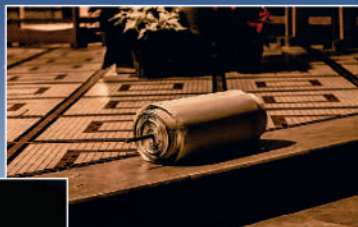
Abtei Dormitio Jerusalem e.V.
LIGA Bank EG
IBAN DE98 7509 0300 0002 1802 78
BIC GENODEF1M05



P. Mathias in Jemina, 2019

I carry your Name in the Holy Night to Bethlehem

Dormitio Christmas Campaign 2020



In 2019 we carried more than
112.000 names and many
more prayers to Bethlehem

For information concerning our privacy policy please
visit our website www.dormitio.net



“As I held in my hands the scroll with the fate of so many people, my own fate became insignificant.

Dear friends of our community

"Let us go to Bethlehem!" exclaimed the shepherds when an angel of God announced to them the birth of Jesus.

Like them, we too will go on a pilgrimage to Bethlehem this year, praying and singing with joy on Holy Night. In a year that has been marked by the Corona Virus, we would be delighted if you could once again join us in prayer. Not only will we gladly carry you in our hearts to the birthplace of our Saviour, we will also write your name on a scroll that will be placed in the Church of the Nativity along with all your prayers and wishes.

From our hearts and in the joy of the Incarnation of our Lord, we wish you a merry and blessed Christmas and the abundant blessings of God for the new year 2021.

*The Benedictine monks
of Dormition Abbey
and the
Tabgha Priory*



I carry your Name...

God calls everyone by name. We are all registered in his heavenly scroll. When we write your name on a large scroll on Christmas Eve, we give expression to this biblical faith. Your name stands for who you are, and so we carry you on Holy Night to the birthplace of Jesus - the place that stands for the hope of salvation and peace.

The newborn child in the manger still has many brothers and sisters in Bethlehem today. The economic consequences of the coronavirus are visible everywhere in Bethlehem, and they particularly affect the poorest and weakest. Of special concern for us are those children in Bethlehem who are challenged by mental or physical disabilities; they are all the more dependent on our donations this year. For this reason, we are once again combining our "Namensaktion" with an appeal for donations.

The donations, on one hand, benefit our community in its various services. But above all, we support social projects and institutions in Bethlehem.

On our website, you can find more information about the institutions we want to support with the donations from this year's Christmas campaign.

In advance we would like to express our deep gratitude for your gift, which creates hope in difficult times.

... to Bethlehem

The severe illness that defines my life moved into the background and I was greatly strengthened.

Report by a pilgrim

